

## Day 14 Greenest

Glyphosate is one of the most widely used herbicides in the world, known for its effectiveness in eradicating weeds and promoting higher crop yields. However, its extensive use has come at a steep cost to our environment and public well-being.

### **Effects on Biodiversity:**

Glyphosate is a non-selective herbicide, meaning it can harm not only unwanted plants but also beneficial ones. This indiscriminate approach disrupts ecosystems by depleting native plant species, which are essential for various wildlife, insects, and microorganisms. The resulting loss of biodiversity can cascade through the food chain, affecting the health of many organisms and threatening ecosystem stability.

### **Effects on Human Health:**

Several studies have raised concerns about the potential health risks associated with glyphosate exposure. Some of the key issues include:

**Cancer:** The International Agency for Research on Cancer (IARC), a part of the World Health Organization, has classified glyphosate as a "probable human carcinogen." Prolonged exposure, primarily among agricultural workers and residents of areas where glyphosate is heavily used, may increase the risk of cancer.

**Endocrine Disruption:** Glyphosate may disrupt the endocrine system, potentially leading to hormone-related health issues.

**Birth Defects and Developmental Problems:** Research suggests a link between glyphosate exposure during pregnancy and birth defects and developmental issues in children.

**Soil Degradation:** The extensive use of glyphosate can degrade soil quality, reducing its fertility and resilience over time.

### **Call to Action:**

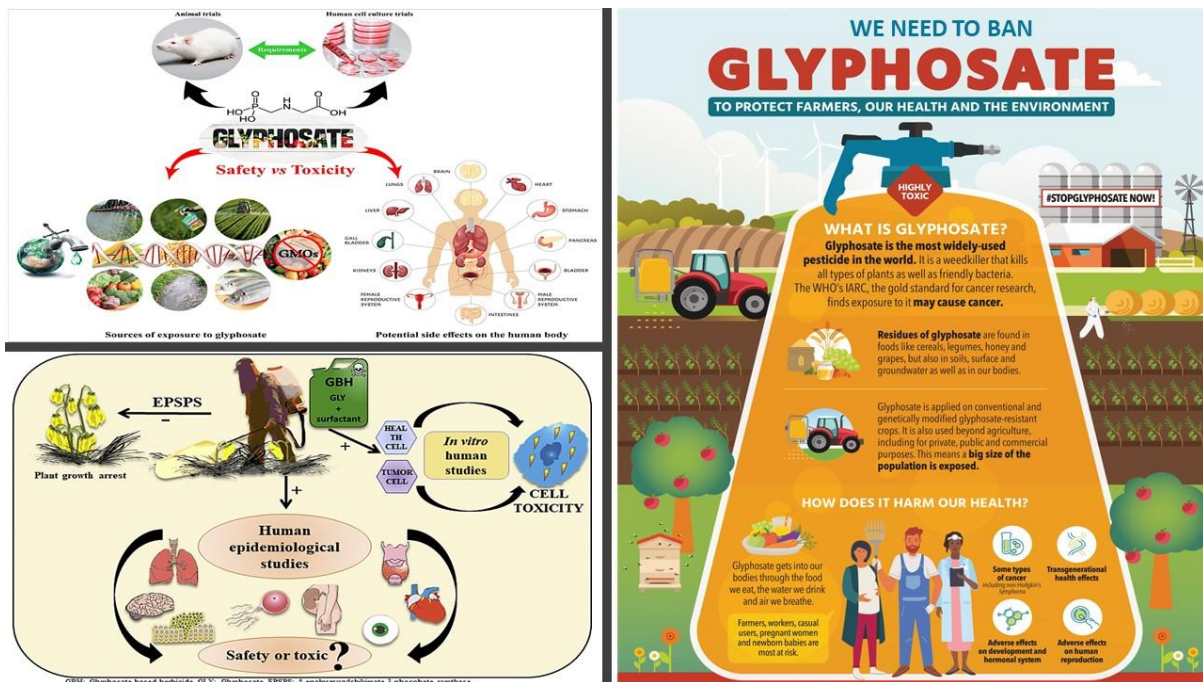
Given the gravity of these issues, I believe it is essential that we take action to mitigate the effects of glyphosate on both human health and biodiversity. Here are some steps we can consider:

**Advocacy:** Raise awareness about glyphosate's impact among our peers, colleagues, and policymakers.

**Alternative Solutions:** Promote and support the development and implementation of sustainable, eco-friendly alternatives to glyphosate.

**Policy Engagement:** Advocate for stricter regulations and safety measures regarding glyphosate use.

I have also taken the liberty of creating a poster that succinctly summarizes the key points I've discussed here. I believe it can serve as a valuable educational resource, and I would be pleased to share it with you.



Here is the Screenshot of my email sent to Professor Dr. Emadul Huda. He is our senior researcher and professor on ecology, ecotoxicology, natural hazard etc.



**Call to Action:**

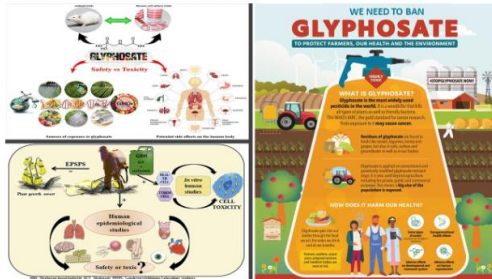
Given the gravity of these issues, I believe it is essential that we take action to mitigate the effects of glyphosate on both human health and biodiversity. Here are some steps we can consider:

**Advocacy:** Raise awareness about glyphosate's impact among our peers, colleagues, and policymakers.

**Alternative Solutions:** Promote and support the development and implementation of sustainable, eco-friendly alternatives to glyphosate.

**Policy Engagement:** Advocate for stricter regulations and safety measures regarding glyphosate use.

I have also taken the liberty of creating a poster that succinctly summarizes the key points I've discussed here. I believe it can serve as a valuable educational resource, and I would be pleased to share it with you.

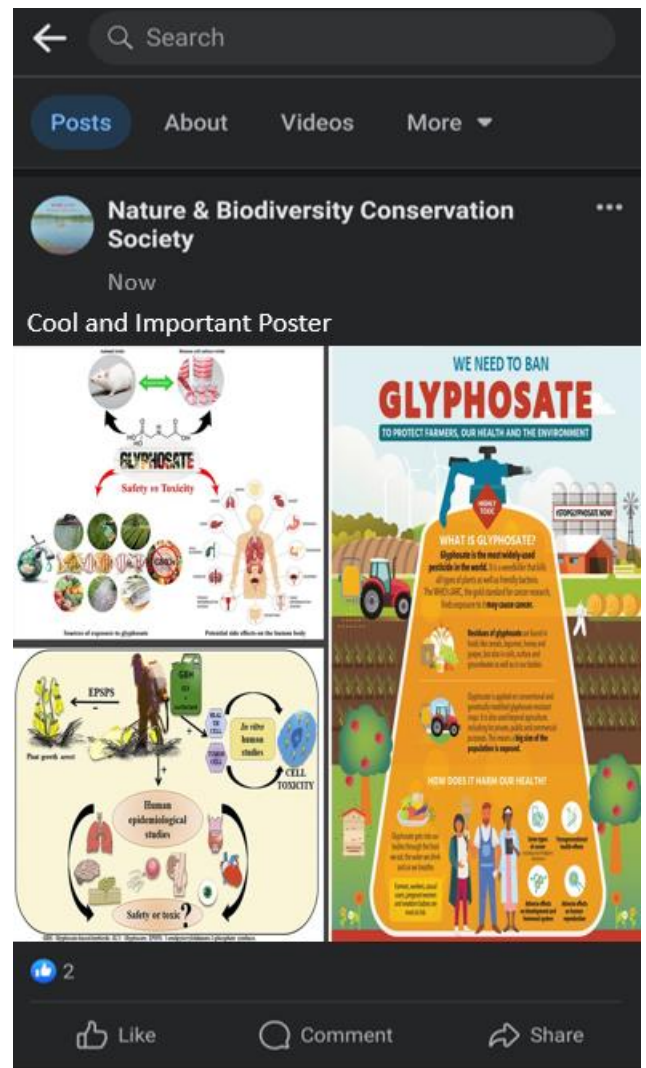


I hope that you, as an esteemed expert in our field, will join me in addressing this critical issue and raising awareness about the adverse consequences of glyphosate. Your guidance and expertise would be invaluable in our pursuit of a healthier, more sustainable future for both our environment and our communities.

Thank you for your time and consideration. I look forward to your thoughts and any guidance you can provide.

Warm regards,

Here's my poster in 3 groups. My preparatory leave for the exam is going and so I couldn't go there in public to post my poster.



All Posts People Groups Events Videos

**Notre Dame Eco And Space Club** · Follow  
7h ago

Amazing and cool way to address the effects of "Glyphosate" on human health or biodiversity by our ex Notrodamian. We are delighted.

The image contains two infographics. The left one, titled "Safety vs Toxicity", shows the chemical structure of Glyphosate, its sources (like Roundup), and potential side effects on the human body such as cancer, kidney damage, and neurological issues. It also mentions "EPSPS" and "In vitro human studies". The right infographic, titled "WE NEED TO BAN GLYPHOSATE", states that Glyphosate is the most widely used pesticide in the world, used on all types of plants. It mentions that the WHO's IARC, the gold standard for cancer research, has reported it may cause cancer. It lists various health effects like cancer, kidney damage, and neurological issues, and notes that it is used on conventional and genetically modified crops. It also mentions that it is used on food crops, including fruits, vegetables, and grains, and that it is found in water, soil, and air. The infographic concludes with a call to action: "We need to ban Glyphosate to protect farmers, our health and the environment".

Ajwad Rahman and 49 others 10 shares

Like Comment Share

**Name:** Mahmudur Rahman

**Username:** Saad

**Institution:** Jahangirnagar University