

PGC

TEAM NAME - Flauna Coenose

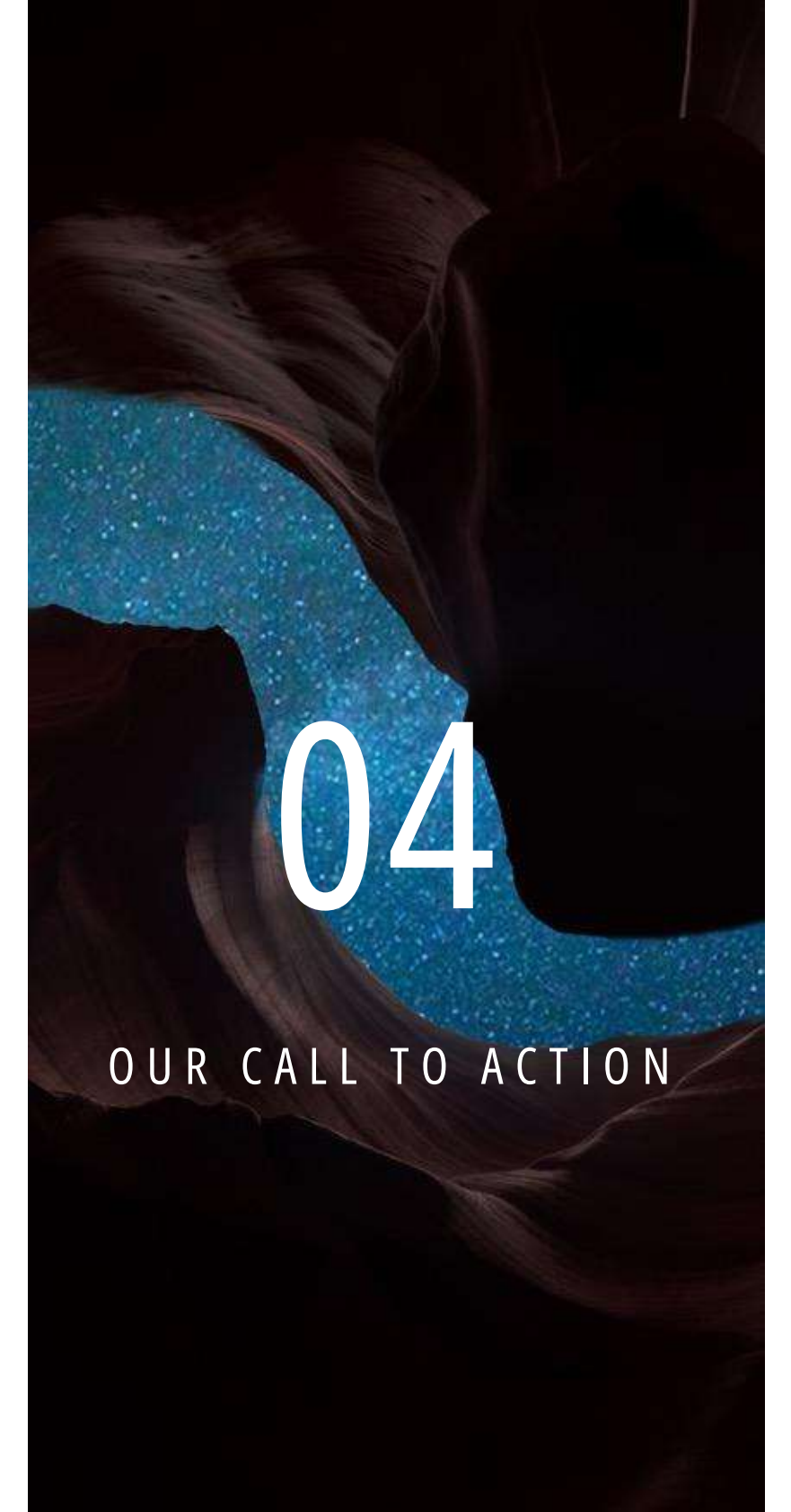
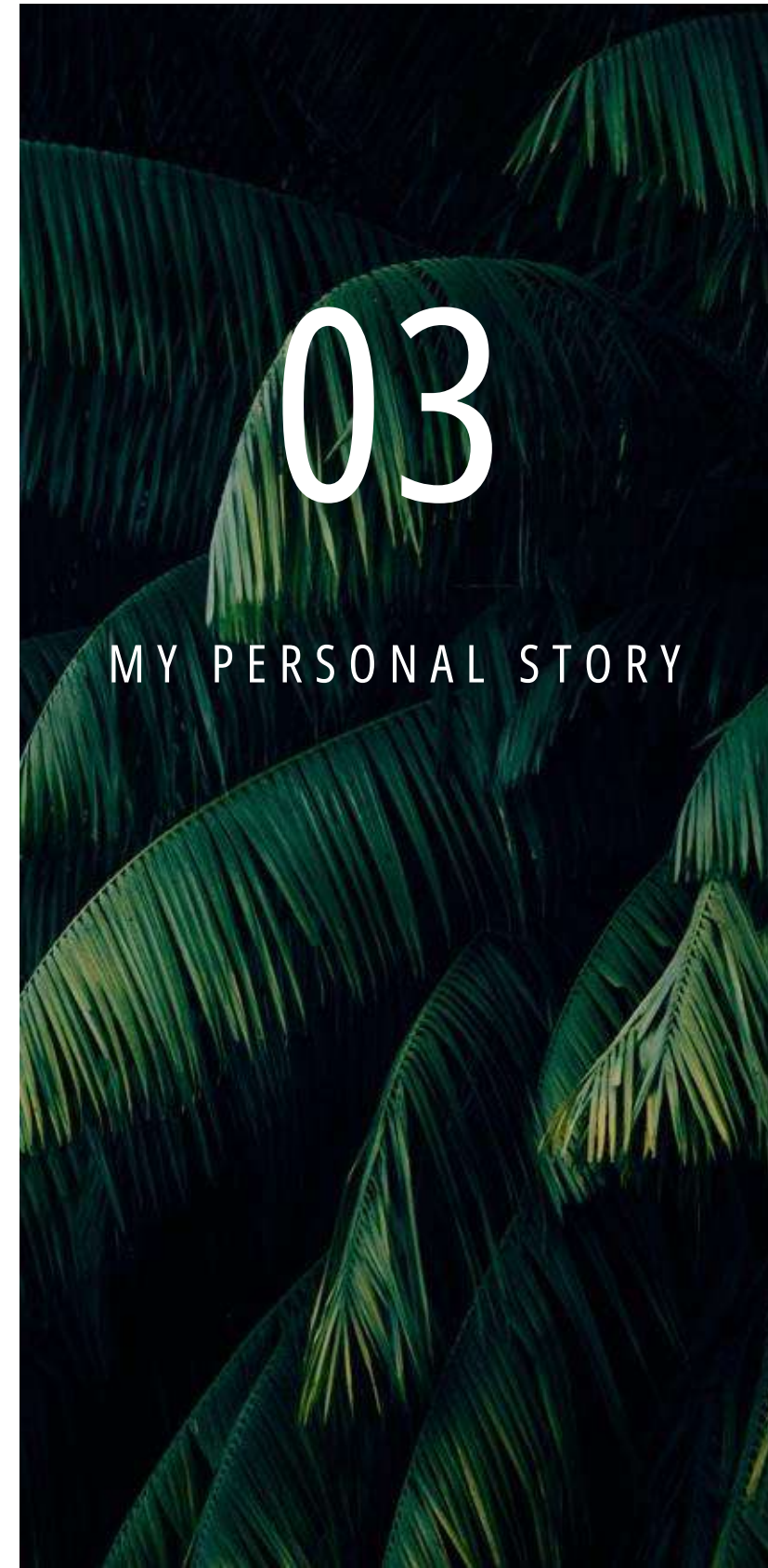
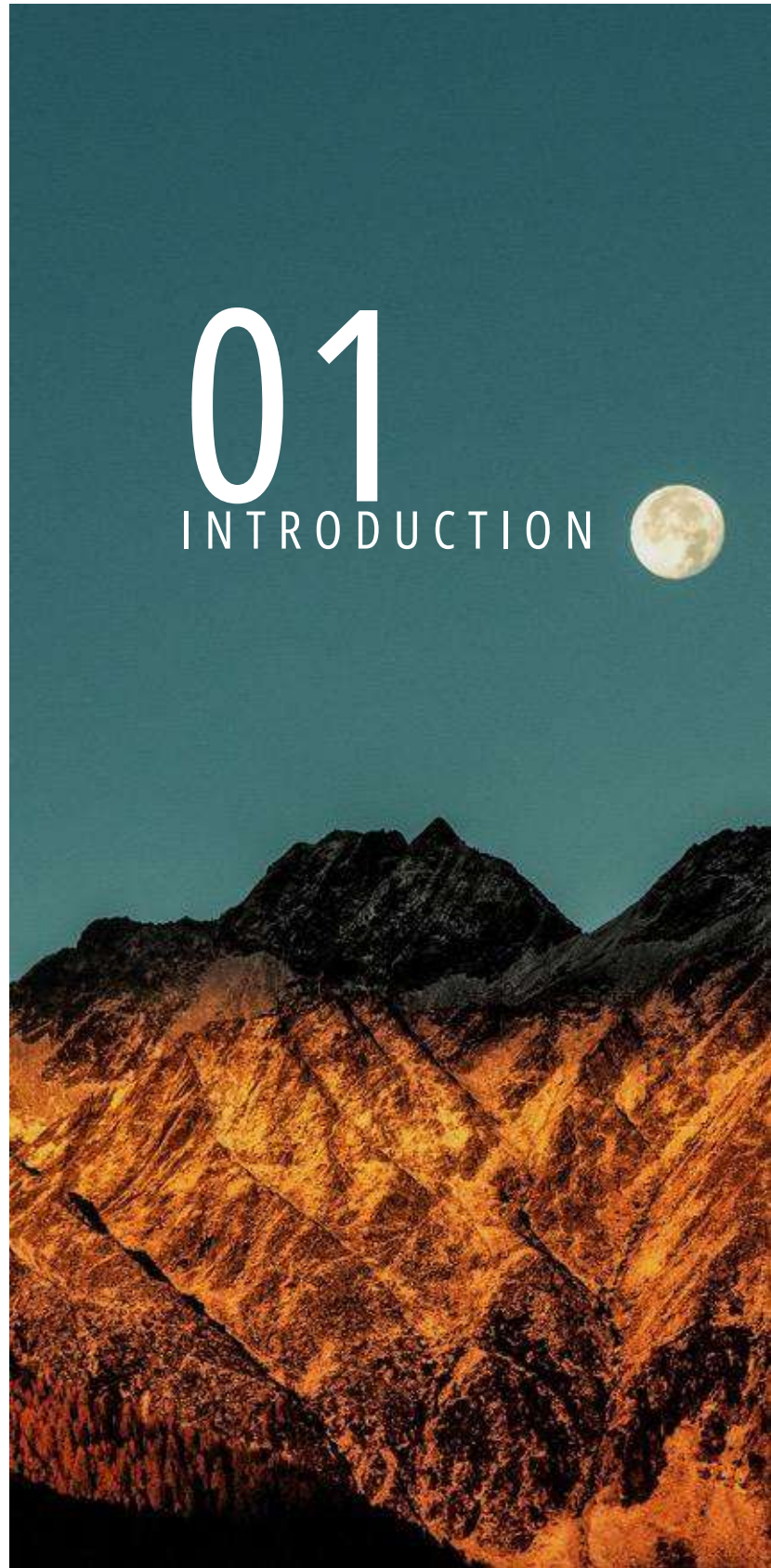
USERNAME - Yashjoshi2003

COLLEGE NAME - Jaipur Engineering College
And Research Centre

A PRESENTATION BY FLAUNA COENOSE

MAKE EARTH GREAT AGAIN





01

INTRODUCTION



THE CLIMATE CHANGE DEMANDS ACTION NOW

Dear Friends, I want to take you on a journey -a journey into the heart of our planet, where every day, our environment, our future, and our very existence are under threat. As you gaze upon this image of a desperate polar bear stranded on a melting iceberg, remember that the climate crisis isn't some distant future; it's a present reality. But it's not a lost cause -yet.



413 ↑
Partspers million

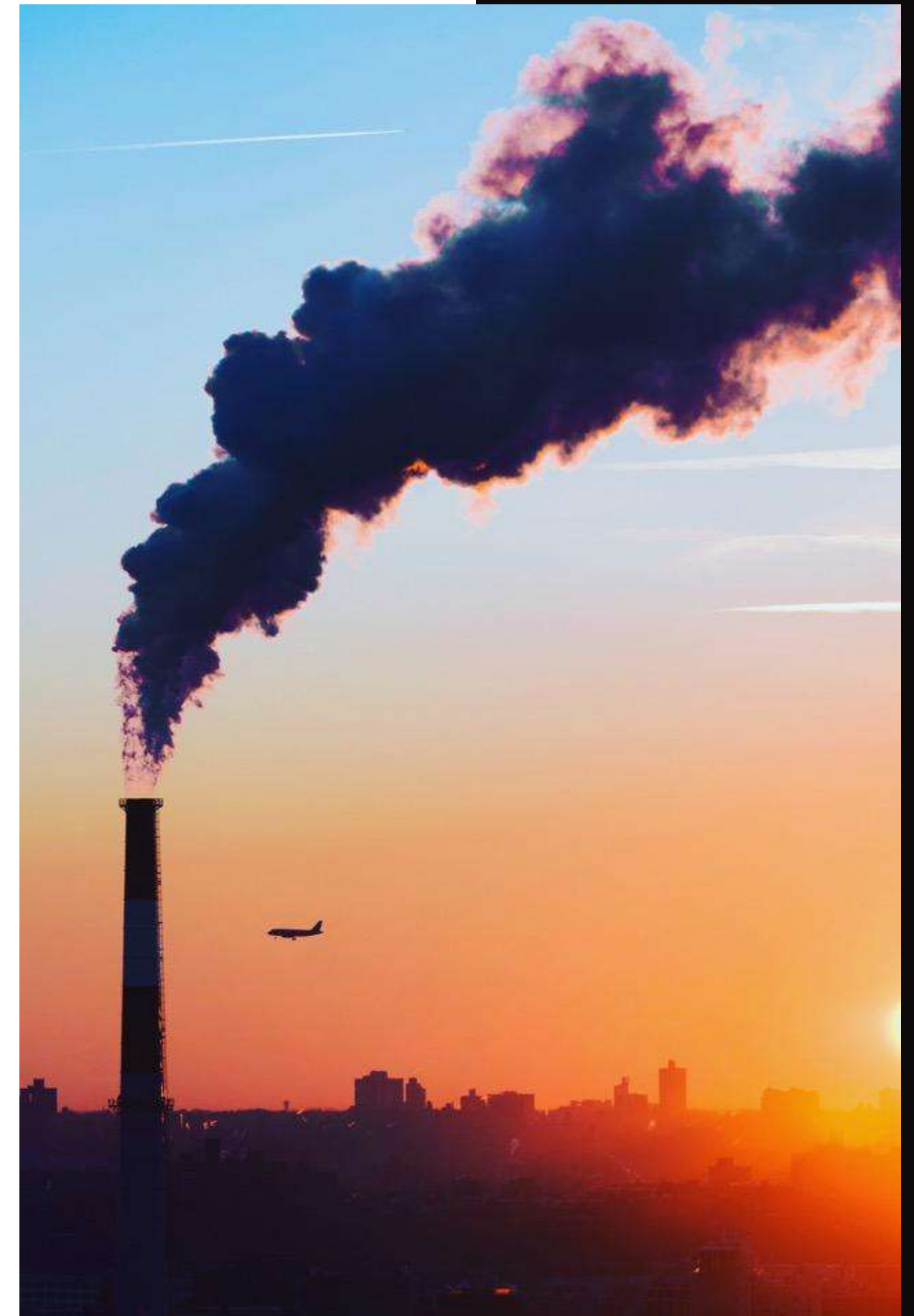
CARBON
DIOXIDE

1.9 ↑
°Fsince1880

GLOBAL
TEMPERATURE

12.85 ↓
ARTIC ICE
Percentper decade
MINIMUM

3.3 ↑
Milimetersper year
SEA LEVEL

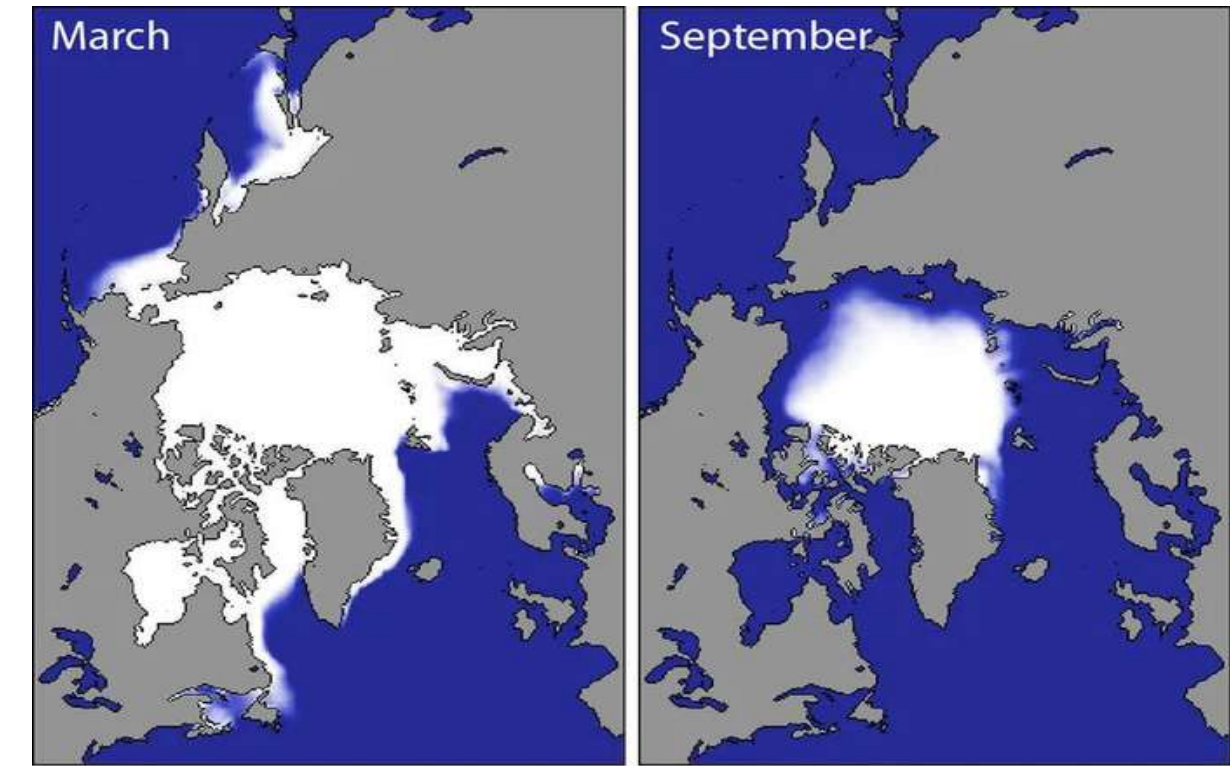


02

FACTS TO KNOW

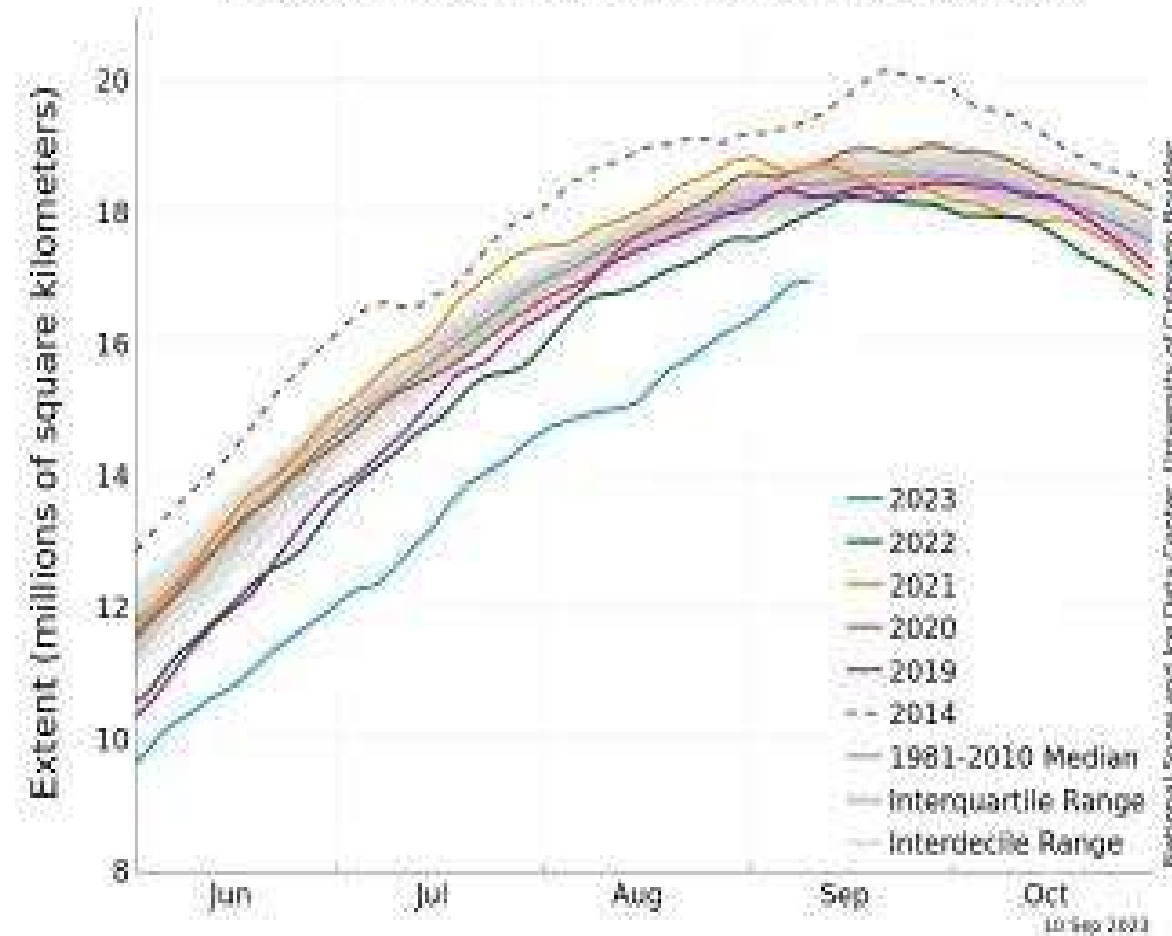


FACTS TO KNOW



Our planet is warming at an alarming rate. In the last century, the Earth's temperature has risen

Antarctic Sea Ice Extent
(Area of ocean with at least 15% sea ice)



- Our planet is warming at an alarming rate. In the last century, the Earth's temperature has risen by 1.2°C.
- The past decade was the hottest in history, with each year hotter than the last.
- The consequences are devastating -more frequent and severe wildfires, hurricanes, droughts, and flooding.



FACTS TO KNOW

2016 WAS THE WARMEST YEAR ON RECORD

NASA and NOAA data show that global averages in 2016 were 1.78 degrees F (0.99 degrees C) warmer than the mid-20th century average. Seventeen of the 18 warmest years have occurred since 2000.

A photograph of an industrial facility, likely a refinery or chemical plant, during sunset. The sky is a mix of orange, yellow, and blue. Several tall smokestacks are visible, with thick white smoke rising from them. The foreground shows a dark, silhouetted landscape with some trees and a road. A large white text box is overlaid on the left side of the image.

FACTS TO KNOW

11% OF EMISSIONS.

Eleven percent of all global greenhouse gas emissions caused by humans are caused by deforestation—comparable to the emissions from all of the cars and trucks on the planet.



FACTS TO KNOW

THE AMAZON IS A CARBON-STORING POWERHOUSE

In the Amazon, 1% of tree species sequester 50% of the region's carbon.

FACTS TO KNOW

800 MILLION PEOPLE

Eleven percent of the world's population is currently vulnerable to climate change impacts such as droughts, floods, heatwaves, extreme weather events and sea-level rise.





FACTS TO KNOW

SAVE NATURE. IT'S CHEAPER

Conserving ecosystems is often more cost-effective than human-made interventions. In the Maldives, building a sea wall for coastal protection cost about US\$ 2.2 billion. Even after 10 years of maintenance costs, it is still four times cheaper to preserve the natural reef.

FACTS TO KNOW

NEARLY 1 MILLION HECTARES LOST

An area of coastal ecosystems larger than New York City is destroyed every year, removing an important buffer from extreme weather for coastal communities and releasing carbon dioxide into the atmosphere.



03

MY PERSONAL STORY





“We can't save the world by playing by the rules, because the rules have to be changed. Everything needs to change - and it has to start today.”

GRETA THUMBERG





MY PERSONAL STORY

As a elder brother, I see the fear in my younger brother eyes when we discuss the future of our planet. I remember a time when our winters were cold, and summers brought joy. But now, we're battling extreme weather and an uncertain future. I want my child, and all children, to grow up in a world where polar bears roam free on solid ice, not stranded on melting floes.

04

OUR CALL TO ACTION



OUR CALL TO ACTION

1 *Demand Policy Change*:

Insist that our leaders enact stringent policies to reduce carbon emissions. We must transition to renewable energy, invest in sustainable infrastructure, and promote green innovation.

2. *Support the Green Economy*:

Encourage the growth of the green economy, creating jobs and fostering innovation in clean energy, transportation, and sustainable agriculture.

3. *Protect Vulnerable Communities*:

Stand with marginalized communities disproportionately affected by climate change. Climate justice means ensuring everyone benefits from our collective efforts.





OUR CALL TO ACTION

4.*Educate and Advocate*:

Spread the word about climate change. Share the facts, the stories, and the urgency. Attend rallies, write to your representatives, and mobilize your communities.

5.*Reduce Your Own Footprint*:

Each of us must reduce our carbon footprint by making sustainable choices in our daily lives. It's a ripple effect -when we change, others follow.

CONCLUSION

THERE IS NO
PLANET B

