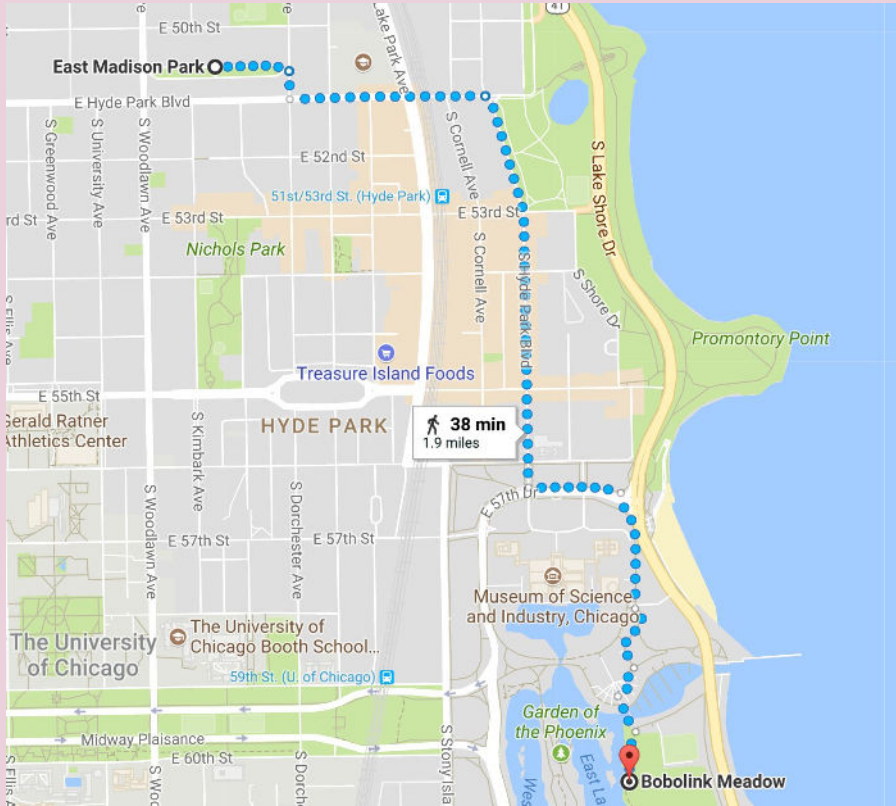


# An Adventure in Hyde Park

Viscous Flow (Jon Raybin and Julia Murphy)  
PGC2017 Day 14 Greener

Username: jraybin  
jraybin@uchicago.edu  
University of Chicago

# There and Back Again



Chicago has hidden green spaces right in our backyard. **Bobolink Meadow**, home to native plants and animals, is our destination on the edge of Hyde Park. Walking will minimize our trip's environmental footprint.



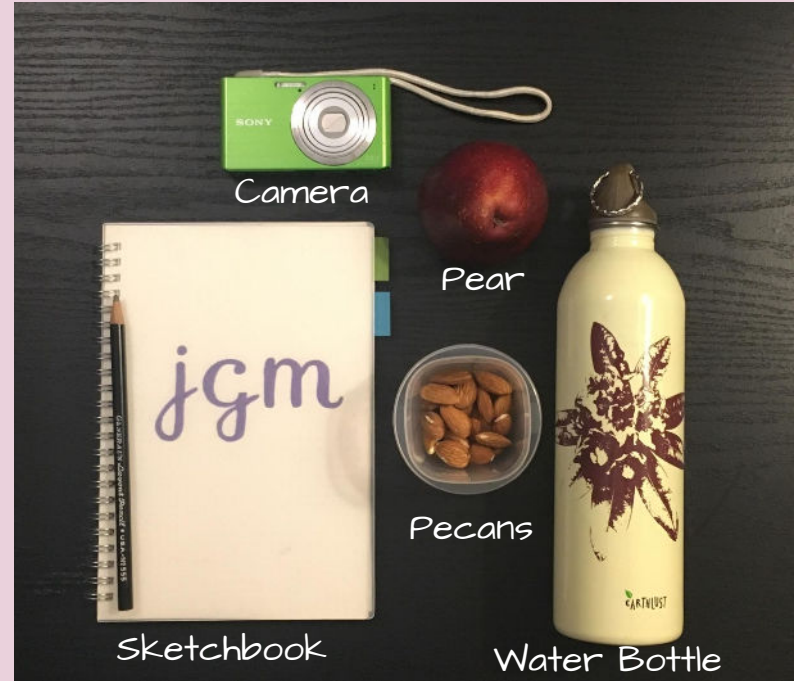
The bobolink is native Illinois prairie bird species.  
<https://www.allaboutbirds.org/guide/Bobolink/id>

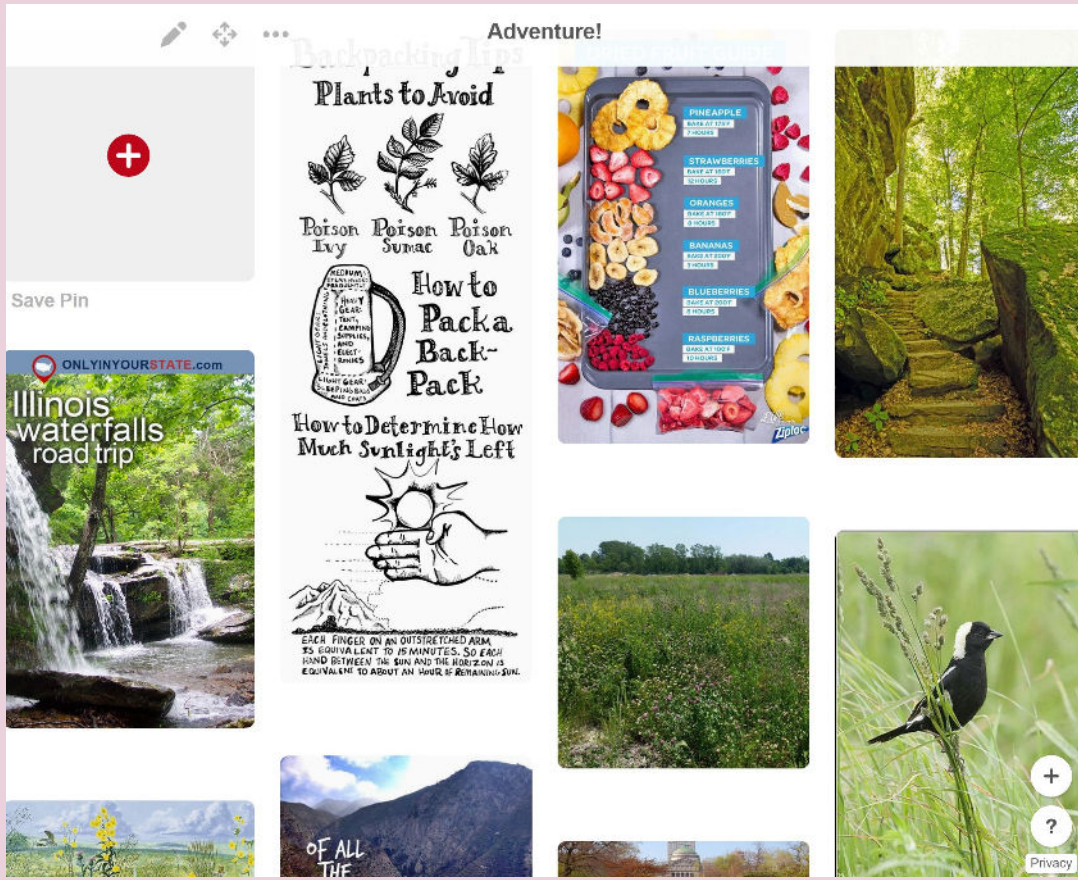
# Packing for an Adventure:

## Jon's Supplies:



## Julia's Supplies:





# Social Media Motivation

Inspiration and preparation are key components for a successful trip. We created a **Pinterest board** to motivate us and guide our trips today and in the future.

<https://www.pinterest.com/viscousflo/adventure/>