



# BIODIVERSITY ON CAMPUS

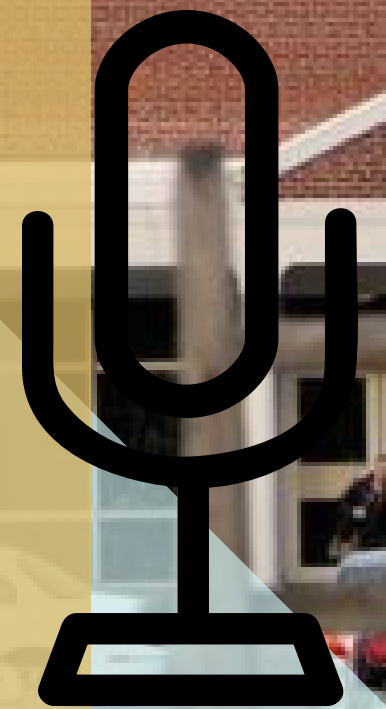
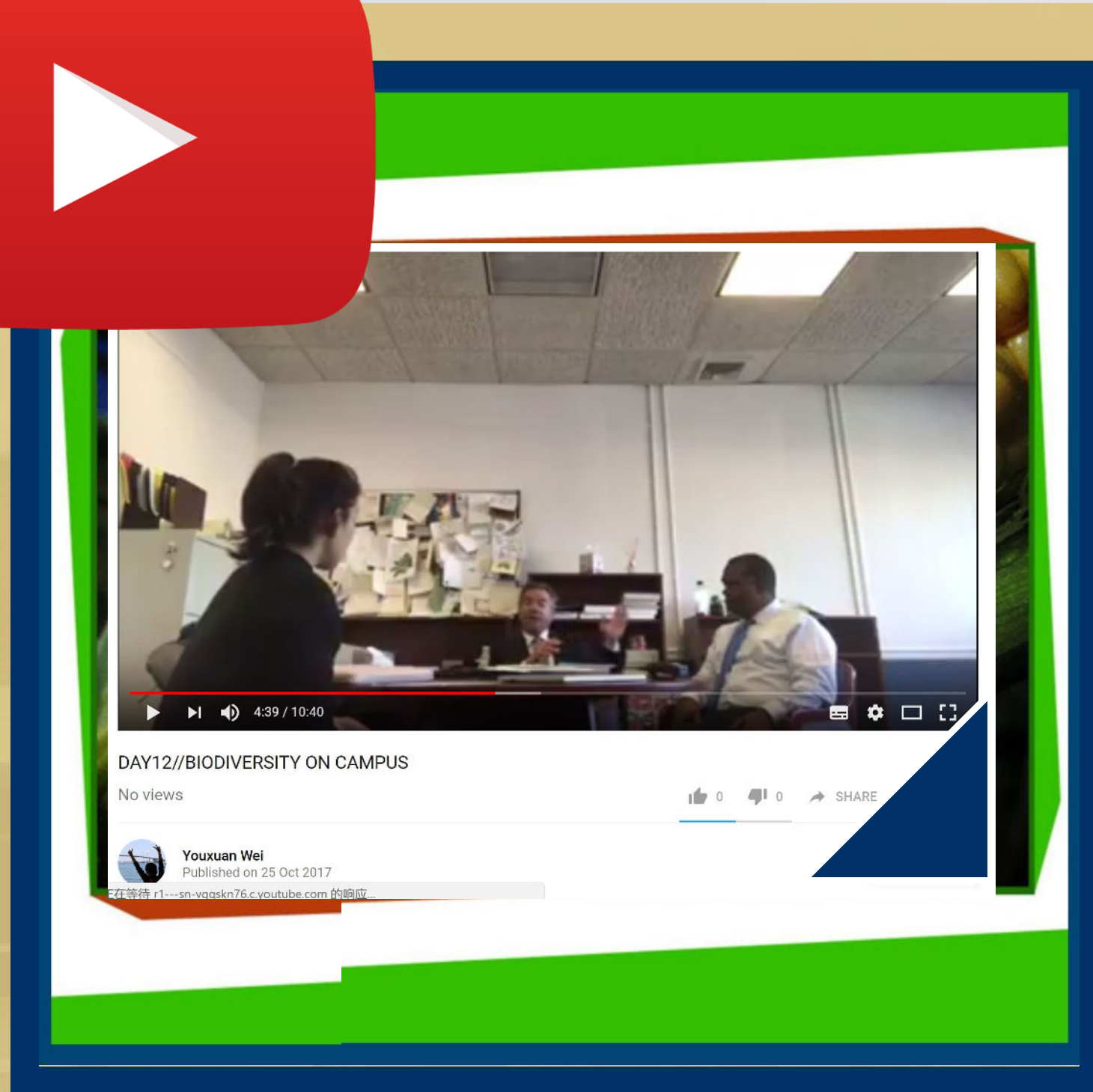
—— DAY 12 -PROJECT GREEN CHALLENGE ——

Youxuan Wei  
@ChrisCat  
Jericho High School  
[youxuan.wei@jerichoapps.org](mailto:youxuan.wei@jerichoapps.org)

# INTERVIEW

I INTERVIEWED TWO  
SCHOOL OFFICIALS  
OUR PLANTING  
APPROACHES

WATCH OUR  
INTERVIEW:  
<https://www.youtube.com/watch?v=15szgtWNkOc>



# BIODIVERSITY

## Interviewees

@ Jericho High  
School



**Michael Hahn**

**Director of Building & Grounds**

**(516) 203-3600 ext. 3233**

**mhahn@jerichoschools.org**



**Dagoberto Artiles**

**Assistant Principal**

**(516) 203-3616**

**dartiles@jerichoschools.org**

# BIODIVERSITY

@JERICH0

## Interview Report

What kinds of pesticides do we use?

"NONE. As mandated by the new york state department of education, we as a school is not allow to use any pesticided or herbicides. Unless there is a true problem with pest, most commonly rats (in city schools), then the board would have to notify the state and all of the public before we spray anything - but htat has not happened since I've worked here"

Do we intentionally protect pollinators on our campus?

"Yes. I mean if you look around the campus, there are lost of bees flying around. We don't actively keep them away from anything, and you can see that just by walking around the tennis courts. Even though our fields are mostly grass, the gardens at the corners do attract lots of bees."



Our school is largely just grass -without any pesticides.

*But in small corners near the buildings, you do find a lot of bees -When I play tennis in the fall, there are always hundreds of bees hanging out there*

# BIODIVERSITY

@JERICHO

## Interview Report

Are there any places where we can plant more pollinator friendly plants?

"Of course -Recently, we have just been doing some renovations on our school garden, which we will try our best to keep eco-friendly, and I think that that fits well with protecting pollinators -since we are doing it for the science research kids so that they can study the plants. There are also corners of our field that's not used by any sports, so we were just thinking of converting them into something of a garden"

***"If your have any plans in mind, on what species to plant or how to arrange the gardens, we're hapy to work with you."***

Mr. Hahn actually agreed to the proposal to plant more pollinator firendly plants!

**-So I mmediately made a plan!**  
**(last slide)**



BIODIVERSITY

@JERICHO

# Interview Report



Where do we source our plants?

We always source them from local farmers and producers -stores like hicks, right down Jericho Turnpike.

Most of the times I even go there by myself and pick what I think is the best for the campus and health of the students. In terms of plant selection we consider factors like student safety and what's good for the environment, and when it comes to stores, we always try to support local, and then price is usually what drives us second

• • •

**Plans Below**



# PLANS

## FOR POLLINATOR FRIENDLY PLANTS



Proposed garden location

### Apring -Early summer

- Rosemay
- Golden Currant
- ChokeCherry

### Mid-Summer

- Illinois Bundleflower
- Lanceleaf Coreopsis
- Stiff Goldenrod

### Fall -Winter

- Aromatic Aester
- Compass plant
- Sawtooth Sunflower

• Total area covered: 300 ft<sup>2</sup>

• Total Budget: \$300-500

• Blooming Season: Year-round

• Pollinator friendly? 100%

Support & source from a Local store



100 Jericho Turnpike,  
Westbury, NY 11590

(516) 334-0066

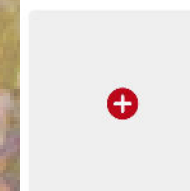
<http://www.hicksnurseries.com/services/landscape-design/>

I made a pinterest board to help explain as well

<https://www.pinterest.com/yxowei/a-nature-friendly-garden-for-the-nature/>  
a nature friendly garden for the nature:)

42 Pins

"We've decimated our forests, wildlands, polluted and overfished our rivers and oceans; all the key ecosystems that not only serve as a home to our planet's biodiversity, but also make life here for us possible." - Leonardo DiCaprio, Actor & Environmentalist



Create Pin



For the Love of Lavender



Growing asters. Blooms in late summer - fall. Stake the...



# my TAKE -AWAYS

I never knew that my school was taking so many environmental measures all along -whether it is regulated by law or from our own incentives. I was so surprised that **my school DIDN'T USE ANY PESTICIDES!** Before the interview, I prepared a whole page of questions regarding the kinds of pesticides we use, and was firing away at the harms of pesticides to our pollinators when Mr Hahn said "none."

It was a **really happy thing** to know that the grass I walk on, and the flower i admire -each inch of nature that I enjoy on campus is pesticide-free. I now appreciate them even more because **I know that they are safe and clean**, and just as safe & clean for the pollinators.

It's a **perfect coincidence** that mr. Hahn is also looking to bring in more flowering plants to beautify our school -I have already **showed my plan to him**, and I'm eager to hear back and start working with him! It's my pleasure to be **able to make my own campus a little more friendlier to our nature** with my own ability & heart. Again, I'm stunned everyday at discovering what I can do on this PGC journey:)

*Think a little Greener, Act a little Greener*

Youxuan Wei

@ChrisCat

Jericho High School

[youxuan.wei@jerichoapps.org](mailto:youxuan.wei@jerichoapps.org)